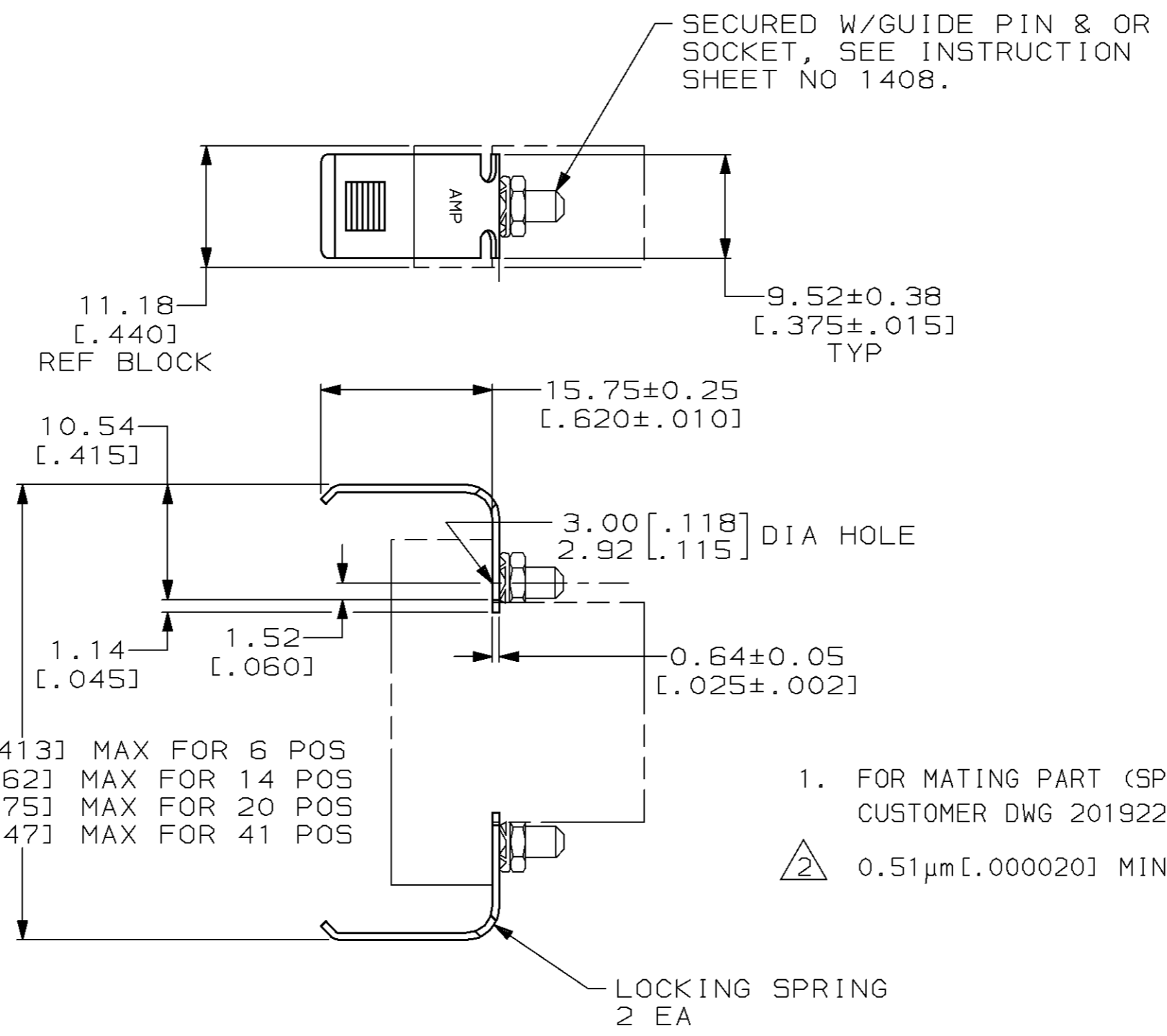


THIS DRAWING IS UNPUBLISHED. RELEASED FOR PUBLICATION ,19 .  
 © COPYRIGHT 19 BY AMP INCORPORATED. ALL RIGHTS RESERVED.

| LOC | DIST | REVISIONS                     |           |     |      |
|-----|------|-------------------------------|-----------|-----|------|
| P   | LTR  | DESCRIPTION                   | DATE      | DWN | APVD |
| BD  | 36   |                               |           |     |      |
|     |      | K REDRAWN PER EC 0020-1245-95 | 08 NOV 95 | -   | -    |



- FOR MATING PART (SPRING CATCH) SEE CUSTOMER DWG 201922.
- 0.51µm [.000020] MIN NICKEL OVER COPPER FLASH.

|  |              |                                    |  |              |    |       |              |       |    |       |    |        |    |                   |            |                    |
|--|--------------|------------------------------------|--|--------------|----|-------|--------------|-------|----|-------|----|--------|----|-------------------|------------|--------------------|
| THIS DRAWING IS A CONTROLLED DOCUMENT FOR AMP INCORPORATED. IT IS SUBJECT TO CHANGE AND THE CONTROLLING ENGINEERING ORGANIZATION SHOULD BE CONTACTED FOR THE LATEST REVISION.  |              | DWN<br>C. REIFSNYDER<br>08 NOV 95  | AMP Incorporated<br>Harrisburg, PA 17105-3608  |              |    |       |              |       |    |       |    |        |    |                   |            |                    |
| DIMENSIONS:<br>mm [INCHES]   |              | CHK<br>R. STONE<br>17 NOV 95       | NAME<br>LOCKING SPRING KIT,<br>UNASSEMBLED, FOR 6, 14,<br>20 & 41 POS BLOCKS, M SERIES |              |    |       |              |       |    |       |    |        |    |                   |            |                    |
| TOLERANCES UNLESS OTHERWISE SPECIFIED:   |              | APVD<br>G. STEINHAUER<br>19 NOV 95 |  |              |    |       |              |       |    |       |    |        |    |                   |            |                    |
| <table border="0"> <tr><td>0 PLC</td><td>±-</td></tr> <tr><td>1 PLC</td><td>±-</td></tr> <tr><td>2 PLC</td><td>±0.13 [.005]</td></tr> <tr><td>3 PLC</td><td>±-</td></tr> <tr><td>4 PLC</td><td>±-</td></tr> <tr><td>ANGLES</td><td>±-</td></tr> </table> |              | 0 PLC                              | ±-   | 1 PLC        | ±- | 2 PLC | ±0.13 [.005] | 3 PLC | ±- | 4 PLC | ±- | ANGLES | ±- | PRODUCT SPEC<br>- | SIZE<br>A3 | CAGE CODE<br>00779 |
| 0 PLC  | ±-           |                                    |  |              |    |       |              |       |    |       |    |        |    |                   |            |                    |
| 1 PLC  | ±-           |                                    |  |              |    |       |              |       |    |       |    |        |    |                   |            |                    |
| 2 PLC  | ±0.13 [.005] |                                    |  |              |    |       |              |       |    |       |    |        |    |                   |            |                    |
| 3 PLC  | ±-           |                                    |  |              |    |       |              |       |    |       |    |        |    |                   |            |                    |
| 4 PLC  | ±-           |                                    |  |              |    |       |              |       |    |       |    |        |    |                   |            |                    |
| ANGLES   | ±-           |                                    |  |              |    |       |              |       |    |       |    |        |    |                   |            |                    |
| MATERIAL<br>CARBON STEEL   |              | APPLICATION SPEC<br>-              | DRAWING NO<br>C-201921   | SCALE<br>2:1 |    |       |              |       |    |       |    |        |    |                   |            |                    |
| FINISH<br>△  |              | WEIGHT<br>-                        | SHEET<br>1 OF 1  | REV<br>K     |    |       |              |       |    |       |    |        |    |                   |            |                    |
| CUSTOMER DRAWING   |              |                                    |  |              |    |       |              |       |    |       |    |        |    |                   |            |                    |